

Click-to-Lock™ Products

Finish jobs faster

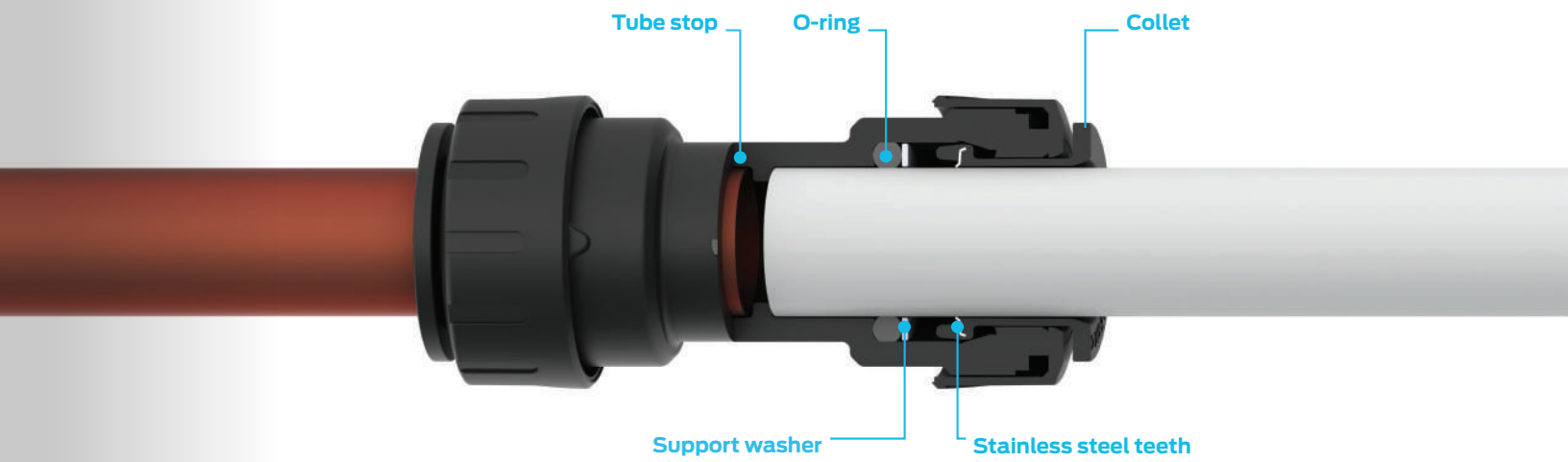
Our Click-to-Lock Range has been designed with an audible click and visible alignment arrows to assure installers that a fitting is secure. Fittings are ideal for use in water softener/conditioner systems and virtually any OEM type of application involving joining solutions.

Click-to-Lock fittings have a collet with stainless steel teeth that grip the pipe when fully inserted, and an O-ring to provide a permanent, leak-proof seal.

When twisted into place, the locking cap locks the pipe in place securely. No special tools, soldering, clamps or glue are ever required. Fittings reduce installation times by more than 40% and are code-approved for behind-the-wall use.

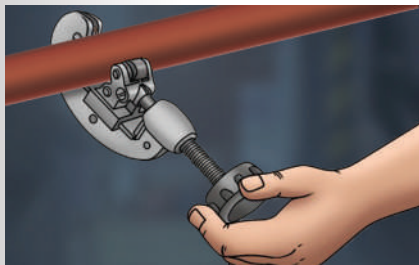


How to make a Click-to-Lock™ connection



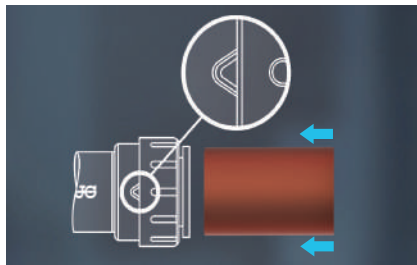
To connect

Keep product clean until ready to use. Always pressure test before use.



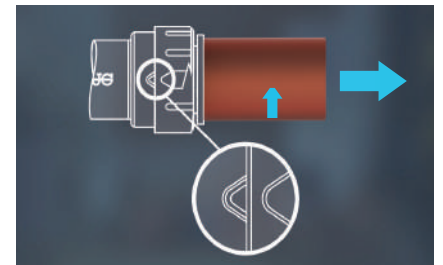
Step 1

Cut the pipe square using a copper pipe cutter. Remove all burrs and sharp edges.



Step 2

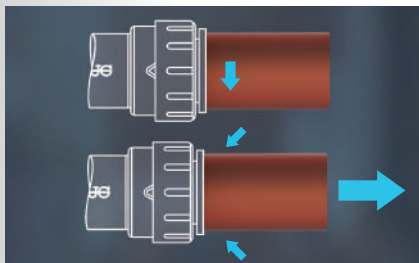
Insert pipe fully into fitting.



Step 3

Turn locking cap quarter turn clockwise to locked position. Once locked, there will be an audible click and indicator marks will be in alignment.

To disconnect



Step 1

Depressurize the system. Turn locking cap quarter turn counter clockwise. Depress collet against the fitting and remove pipe.

Click-to-Lock™ Fittings Black CTS

The PSEI Range of Click-to-Lock fittings is offered in 3/8" to 1" CTS sizes. These fittings are manufactured from high-quality engineered plastic with EPDM O-rings, are UV stabilized for outdoor use and are suitable for hot and cold water plumbing applications.

Working pressures and temperatures

Water Max. 160 psi at 73 °F
 Max. 100 psi at 180 °F
 Max. 80 psi at 200 °F

For use with Copper, PEX and CPVC Pipe.

For technical specifications, refer to page 81.



Male Connector NPT Thread



Part Number	Size CTS x NPT	Bag Qty	Box Qty
PSEI011624E	3/8" x 1/2"	10	100
PSEI012024E	1/2" x 1/2"	10	80
PSEI012026E	1/2" x 3/4"	5	60
PSEI012824E	3/4" x 1/2"	5	50
PSEI012826E	3/4" x 3/4"	5	50
PSEI012828E	3/4" x 1"	5	30
PSEI013626E	1" x 3/4"	2	30
PSEI013628E	1" x 1"	2	20

Only to be used with plastic mating threads

Tee



Part Number	Size CTS	Bag Qty	Box Qty
PSEI0216E	3/8"	5	50
PSEI0220E	1/2"	5	30
PSEI0228E	3/4"	5	15
PSEI0236E	1"	1	10

Elbow



Part Number	Size CTS	Bag Qty	Box Qty
PSEI0316E	3/8"	10	80
PSEI0320E	1/2"	10	50
PSEI0328E	3/4"	5	30
PSEI0336E	1"	5	15

Coupler



Part Number	Size CTS	Bag Qty	Box Qty
PSEI0416E	3/8"	10	80
PSEI0420E	1/2"	10	50
PSEI0428E	3/4"	5	30
PSEI0436E	1"	5	20

Male Stem Adapter NPT Thread



Part Number	Size Stem x NPT	Bag Qty	Box Qty
PSEI052826E	3/4" x 3/4"	10	60
PSEI053628E	1" x 1"	10	40

Only to be used with plastic mating threads

Reducer



Part Number	Size Stem x CTS	Bag Qty	Box Qty
PSEI062016E	1/2" x 3/8"	10	100
PSEI062820E	3/4" x 1/2"	10	80
PSEI063628E	1" x 3/4"	5	40

Click-to-Lock™ Fittings Black CTS

Reducing Coupler



Part Number	Size CTS	Bag Qty	Box Qty
PSEI202016E	1/2" x 3/8"	10	80
PSEI202820E	3/4" x 1/2"	5	40
PSEI203628E	1" x 3/4"	5	20

Reducing Elbow



Part Number	Size CTS	Bag Qty	Box Qty
PSEI212016E	1/2" x 3/8"	10	60
PSEI212820E	3/4" x 1/2"	5	40
PSEI213628E	1" x 3/4"	5	20

Plug In Elbow



Part Number	Size Stem x CTS	Bag Qty	Box Qty
PSEI222020E	1/2" x 1/2"	10	80
PSEI222828E	3/4" x 3/4"	5	40
PSEI223636E	1" x 1"	5	20

Reducing Tee



Sizes are listed in the following order
1
2
3

Part Number	Size CTS	Bag Qty	Box Qty
PSEI3016AE	1/2" x 1/2" x 3/8"	5	40
PSEI3028AE	3/4" x 3/4" x 1/2"	5	20
PSEI3028BE	3/4" x 1/2" x 1/2"	5	20
PSEI3028CE	1/2" x 1/2" x 3/4"	5	20
PSEI3028DE	3/4" x 1/2" x 3/4"	5	20
PSEI3036AE	1" x 1" x 3/4"	1	10

End Cap



Part Number	Size CTS	Bag Qty	Box Qty
PSEI4616E	3/8"	10	200
PSEI4620E	1/2"	10	150
PSEI4628E	3/4"	5	80
PSEI4636E	1"	5	40

Male Fixed Elbow NPT Thread



Part Number	Size CTS x NPT	Bag Qty	Box Qty
PSEI482024E	1/2" x 1/2"	5	60
PSEI482826E	3/4" x 3/4"	5	50

Only to be used with plastic mating threads

Female Stem Adapter NPS Thread



Part Number	Size Stem x NPS	Bag Qty	Box Qty
PSEI502034E	1/2" x 1/2"	10	100

Stackable Tee



Part Number	Size CTS	Bag Qty	Box Qty
PSEI532020E	1/2" x 1/2" x 1/2"	5	40
PSEI532820E	3/4" x 3/4" x 1/2"	5	25
PSEI532828E	3/4" x 3/4" x 3/4"	5	20
PSEI533628E	1" x 1" x 3/4"	1	10

Stackable Tee Details



Ideal for multi-port manifold



Sizes for Stackable Tee are listed in the following order

Click-to-Lock™ Fittings Black CTS

Female Connector NPS Thread



Part Number	Size CTS x NPS	Bag Qty	Box Qty
PSEI622036E-L	1/2" x 3/4"	2	150
PSEI622836E-L	3/4" x 3/4"	2	150
PSEI622838E-L	3/4" x 1"	2	150
PSEI623638E-L	1" x 1"	2	100
PSEI62363AE-L	1" x 1 1/4"	1	75

Female Elbow Connector NPS Thread



Part Number	Size CTS x NPS	Bag Qty	Box Qty
PSEI632836E-L	3/4" x 3/4"	2	150
PSEI632838E-L	3/4" x 1"	2	100
PSEI63283AE-L	3/4" x 1 1/4"	1	75
PSEI63363AE-L	1" x 1 1/4"	1	75

Shut-Off Valve



Part Number	Size CTS	Bag Qty	Box Qty
PSEISV20EP	1/2"	1	100
PSEISV28EP	3/4"	1	75

Includes 2 interchangeable buttons for color coding hot & cold water.

Slip Connector Burst Pipe Repair Fitting



Part Number	Size CTS	Bag Qty	Box Qty
1/2SCEP	1/2"	1	125
3/4SCEP	3/4"	1	75

A quick and easy method of replacing burst or damaged pipe without the need to alter existing pipe work.

Female Garden Hose Elbow NH Thread



Part Number	Size OD x NH	Bag Qty	Box Qty
NC2723	3/8" x 3/4"-11.5	5	400

Flexi Hose

Working pressures and temperatures

Water Max. 125 psi, Min. 20 psi
Max. 160 °F, Min. 40 °F

Flexi Hose - 18" Length NPS Thread



Part Number	Size CTS x NPS	Bag Qty	Box Qty
PSFC20N3618E	1/2" x 3/4"	1	40
PSFC28N3618E	3/4" x 3/4"	1	40

Flexi Hose - 18" Length



Part Number	Size CTS x CTS	Bag Qty	Box Qty
PSFC28C2818E	3/4" x 3/4"	1	40